



Precast Concrete Steps, Stoops & Optional Handrails

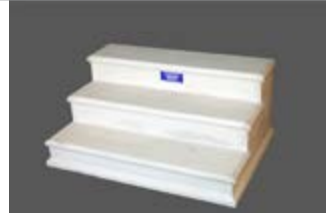
7" Steps (48" Width)



1 Tread 7" Rise
Step Unit #10017



2 Tread 7" Rise
Step Unit #10027
* Rail # 11027SR



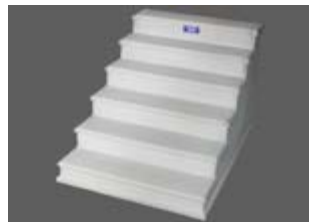
3 Tread 7" Rise
Step Unit #10037
* Rail #11037SR



4 Tread 7" Rise
Step Unit #10047
* Rail #11047SR



5 Tread 7" Rise
Step Unit #10057
* Rail #11057SR



6 Tread 7" Rise
Step Unit #10067
* Rail #11067SR

7" Steps with 24" Stoop (48" Width)



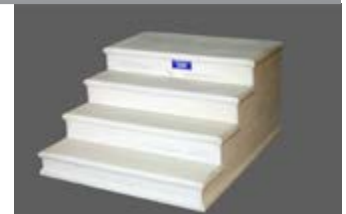
1 Tread 24" Stoop
Step Unit #10017S



2 Tread 24" Stoop
Step Unit #10027S
* Rail #11037SR



3 Tread 24" Stoop
Step Unit #10037S
* Rail #11047SR



4 Tread 24" Stoop
Step Unit #10047S
* Rail #11057SR

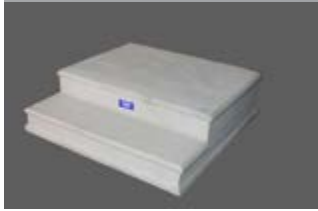


5 Tread 24" Stoop
Step Unit #10057S
* Rail #11067SR

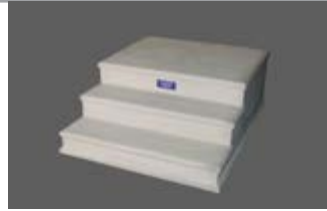


Precast Concrete Steps, Stoops & Optional Handrails

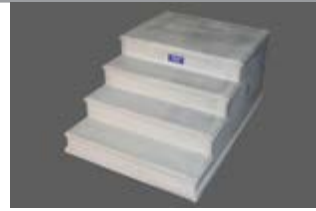
7" Steps with 36" Stoop (48" Width)



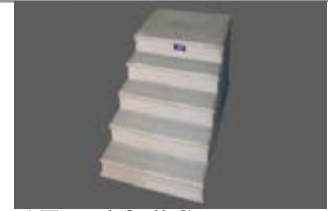
2 Tread 36" Stoop
Step Unit #1002736S
*Rail #1102736SR



3 Tread 36" Stoop
Step Unit #1003736S
* Rail #1103736SR



4 Tread 36" Stoop
Step Unit #1004736S
* Rail #1104736SR



5 Tread 36" Stoop
Step Unit #1005736S
* Rail #1105736SR

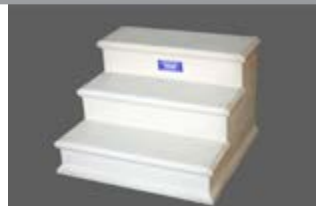
8" Steps (36" Width)



1 Tread 8" Rise
Step Unit #10018



2 Tread 8" Rise
Step Unit #10028
* Rail #11027SR



3 Tread 8" Rise
Step Unit #10038
* Rail #11037SR



4 Tread 8" Rise
Step Unit #10048
* Rail #11047SR