

Lagless Crossings

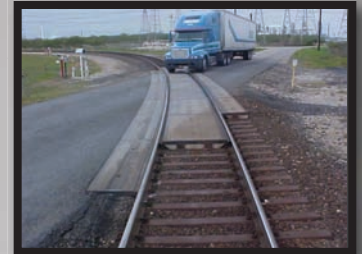
In today's ever changing markets, successful companies respond to that change and meet the demands of their clients. The Century Group has demonstrated its versatility by offering the Century lagless grade crossing system to meet the various needs of today's grade crossing market. Taking advantage of



over 50 years of precast concrete manufacturing and railroad construction experience, the Century lagless grade crossing system is produced using the same high quality materials, craftsmanship and manufacturing techniques as the Century premium lagtype crossings.

Century Concrete Railroad Crossings at Rail Car Repair Facility

The weight of the Century lagless crossing panels provides stability and reduces the tendency of the panels to move in a vertical or horizontal direction when impacted by vehicular traffic.



Concrete Lagless Grade Crossing Panels

As a supplier, Century Group Inc. is proactive in the railroad industry by ensuring that all sales and technical field representatives have been through the Class I Railroad's e-rail safe program, www.e-railsafe.com, the Roadway Worker On-Track Safety program overseen by the Federal Railroad Administration (FRA) and the Transportation Worker Identification Credential Program (TWIC) implemented by Transportation Security Agency (TSA) and the U. S. Coast Guard. Safety and security at jobsites is the highest priority at Century Group Inc.



Applications & Uses:

- Designed for HS20-44 load specifications.
- All panels are 9' long manufactured to fit on 10' wood, steel or flat top concrete crossing ties.
- Gauge panels are 9' x 51'. Field panels are 9' x 26-1/4'.
- Panel design fits over all rail fastening and anchoring systems.
- Lagless grade crossing system can be installed using Century's preformed elastomeric flangeway filler.
- Custom manufactured to fit curved track.
- Surface has non-skid broom finish.
- Manufactured for various rail heights from 90# rail and above.
- Built in tapered ends available on request.
- Other custom lengths and widths available.
- The weight of the Century lagless crossing panels provides stability and reduces the tendency of the panels to move in a vertical or horizontal direction when impacted by vehicular traffic.

